

M60/M62/M66 Simister Island Interchange

TR010064

**ENVIRONMENTAL STATEMENT FIGURES
CHAPTER 15 ASSESSMENT OF
CUMULATIVE EFFECTS**

APFP 5(2)(a)

Planning Act 2008

Infrastructure Planning (Applications: Prescribed
Forms and Procedure) Regulations 2009

VOLUME 6.2

April 2024

Infrastructure Planning

Planning Act 2008

**The Infrastructure Planning
(Applications: Prescribed Forms and
Procedure) Regulations 2009**

M60/M62/M66 Simister Island Interchange
Development Consent Order 202[]

ENVIRONMENTAL STATEMENT FIGURES
CHAPTER 15 ASSESSMENT OF CUMULATIVE EFFECTS

Regulation Reference	5(2)(a)
Planning Inspectorate Scheme Reference	TR010064
Application Document Reference	TR010064/APP/6.2
Author	M60/M62/M66 Simister Island Interchange Costain Jacobs Partnership Project Team & National Highways

Version	Date	Status of Version
P01	April 2024	DCO APPLICATION ISSUE

CONTENTS

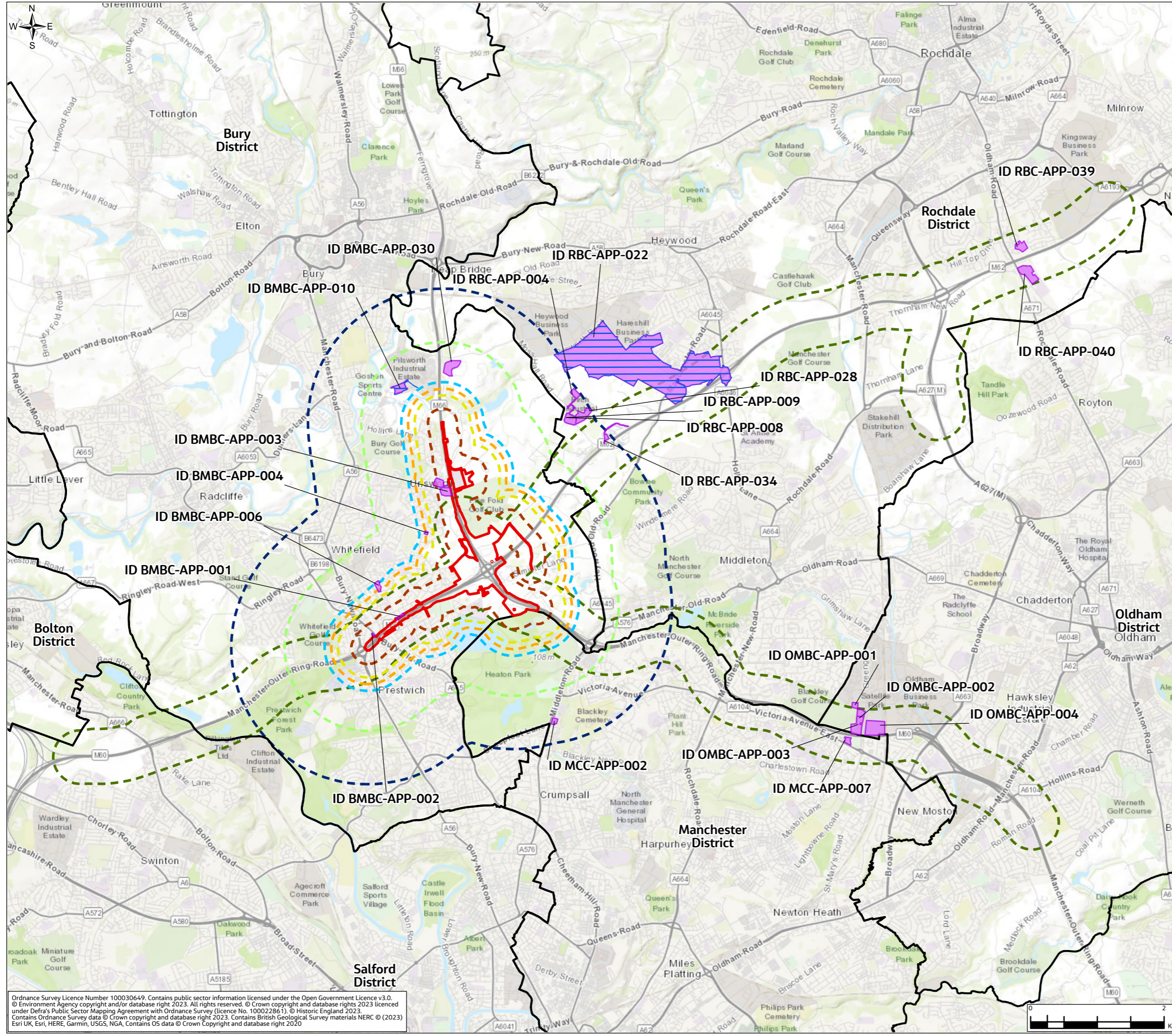
Environmental Statement Figures Chapter 15 Assessment of Cumulative Effects1

Environmental Statement Figures Chapter 15 Assessment of Cumulative Effects

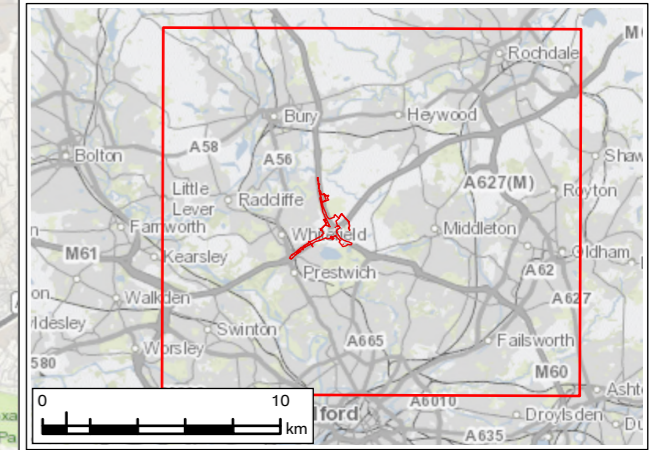
1.1.1 This document contains the following figures:

- Figure 15.1 Shortlisted Other Developments for Inter-project Cumulative Effects Assessment

FIGURE 15.1



- Legend**
- Order Limits
 - Local Planning Authority Boundaries
 - Other Developments Progressed to Stages 3 & 4 of the CEA
 - Shortlist of Other Developments
- Zone of Influences (ZOIs)**
- Noise and Vibration (Construction Vibration) - 0.2km
 - Air Quality (Construction Dust) - 0.4km
 - Geology and Soils - 0.5km
 - Noise and Vibration (Construction Noise) - 0.6km
 - Cultural Heritage (Non-Designated Heritage Assets and Their Setting); Hydromorphology - 1km
 - Population and Human Health (Land Use and Community Health); Operational Noise - 1.2km
 - Landscape and Visual; Biodiversity; Population and Human Health (Physical Activity Opportunities); Flood Risk; Water Quality; Groundwater - 2km
 - Air Quality (Traffic Emissions) - 0.4km from Affected Road Network



P01	JAN 24	For DCO application	LT	MS	JR	BB
Rev.	Rev. Date	Purpose of revision	Draw	Check'd	Rev'd	Appr'd
Development Consent Order Number: TR010064			Development Consent Order Drawing Number: 6.2			
Client 						
Project REGIONAL DELIVERY PARTNERSHIP M60/M62/M66 SIMISTER ISLAND INTERCHANGE						
Drawing Title ENVIRONMENTAL STATEMENT SHORTLISTED OTHER DEVELOPMENTS FOR INTER-PROJECT CUMULATIVE EFFECTS ASSESSMENT						
Drawing Status S4 – SUITABLE FOR STAGED APPROVAL						
Scale @ A3 1:55,000		DO NOT SCALE				
Jacobs No. B36601F0		Rev		P01		
Client No. HE548642						
Drawing Number HE548642-JAC-LDC-SII_MLT-SK-LE-0066						

Ordnance Survey Licence Number 100030649. Contains public sector information licensed under the Open Government Licence v3.0.
 © Environment Agency copyright and/or database right 2023. All rights reserved. © Crown copyright and database rights 2023 licensed under Defra's Public Sector Mapping Agreement with Ordnance Survey (licence No. 100022861). © Historic England 2023.
 Contains Ordnance Survey data © Crown copyright and database right 2023. Contains British Geological Survey materials NERC © (2023)
 Esri UK, Esri, HERE, Garmin, USGS, NGA, Contains OS data © Crown Copyright and database right 2020

© Copyright 2023 Jacobs UK Limited. The concepts and information contained in this document are the property of Jacobs. Use or copying of this document in whole or in part without the written permission of Jacobs constitutes an infringement of copyright. This drawing has been prepared on behalf of, and for the exclusive use of Jacobs' Client, and is subject to, and issued in accordance with, the provisions of the contract between Jacobs and the Client. Jacobs accepts no liability or responsibility whatsoever for, in respect of, any use of, or reliance upon, this drawing by any third party.